

## LMFTM FLOTATION MACHINE

Laboratory Flotation Test Machine

SUPERIOR FLOTATION MACHINE  
FOR PROVIDING AN ACCURATE  
RELIABLE MEANS OF  
REPRODUCING TEST RESULTS

- Digital control by touch screen
- Flotation cells capacities from 0,2 - 7 Litres
- Standard square and round cells from various materials:  
stainless steel, acrylic, pu-coated, PTFE coated
- Cells and impellers for high temperature flotation made from  
stainless steel
- Impellers & diffuser made from various materials: stainless  
steel, acrylic, pu-coated, PTFE coated



## Description

The versatile Laboratory Flotation Bench has been designed to provide an accurate reliable means of re-producing test results. It is ideally suited in duplicating plant processes and operations.

The laboratory flotation bench can be used for :

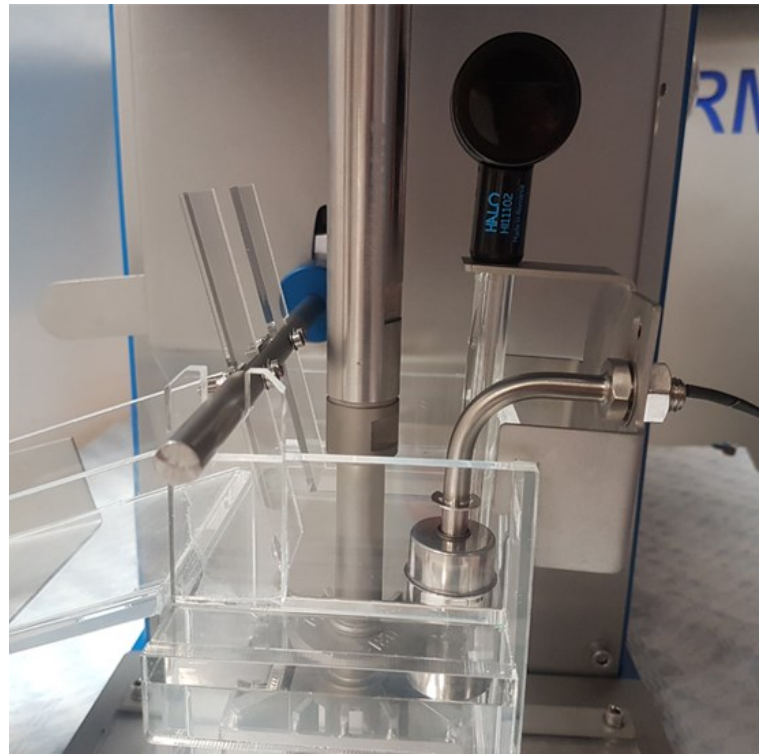
- Flotation
- Attritioning
- Blending
- Agitating

Several configurations are available for impeller style and diffuser arrangement. All wetted metal parts are made of high quality 316 stainless steel construction. To set up and control the parameters there is a digital touch screen.

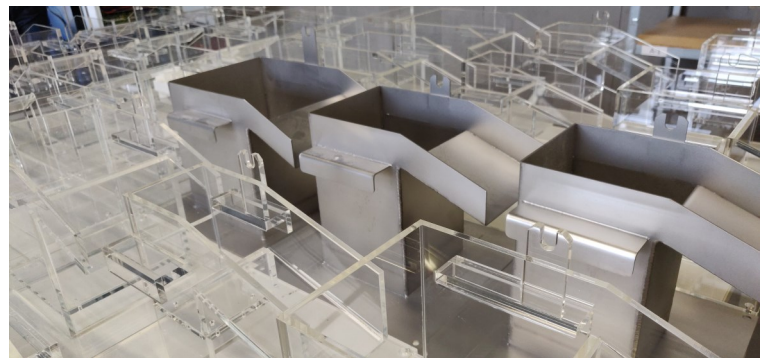
## Flotation cells

Cells are made from clear acrylic with impellers of rvs 316. The cell will handle materials ground for high temperature flotation or attrition testing, a stainless steel cell and impeller must be used.

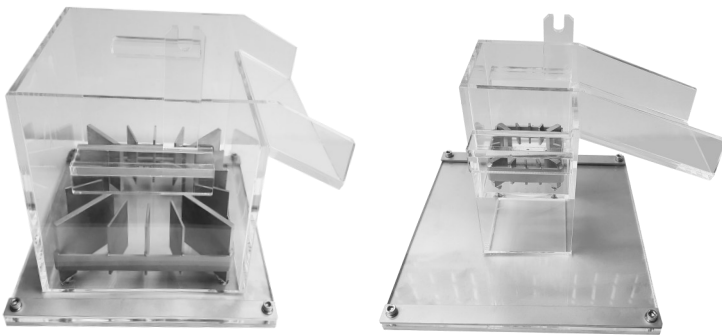
We can produce different volumes of flotation cells from 0,20 litres up to 7 litres



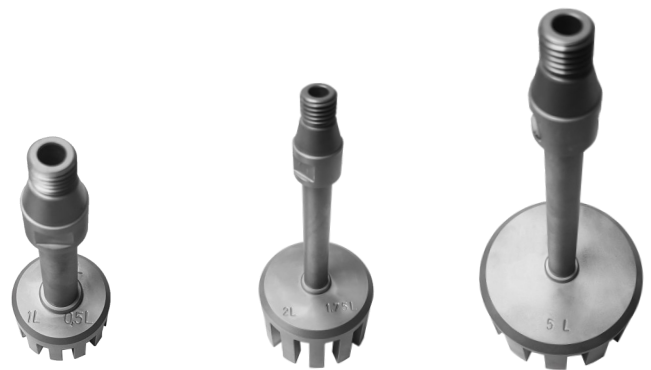
Cell with auto froth remover, level indicator and ph meter



acrylic and stainless steel flotation cells in various volumes



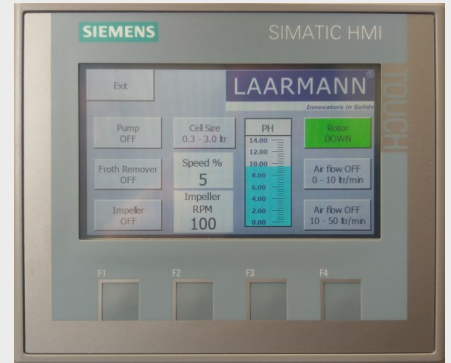
Flotation cell



Flotation rotors

## Features and benefits

- Digital set up and control by touch screen
- Speed setting
- Filling level control
- Air pump
- Foam remover by skimmer
- PH value
- Round cells



## Flotation machine models



LMFTM Flotation machine



LMFTM Flotation machine bottom driven



Flotation machine with temperature meter

### Technical data

Flotation cells capacity	0,2 - 7 litres
Impellers	Interchangeable, corresponding to cell
Electrical requirements	0,55KW/220V/50Hz, other available on request
Impeller speed / Electronic	100 - 2000 rpm
Compressed air supply	600 - 800 kpa
Approximate mass	125kgs
Shaft diameter	20 mm
Dimensions (machine)	Depending on version